

PORTUGAL



LISBON



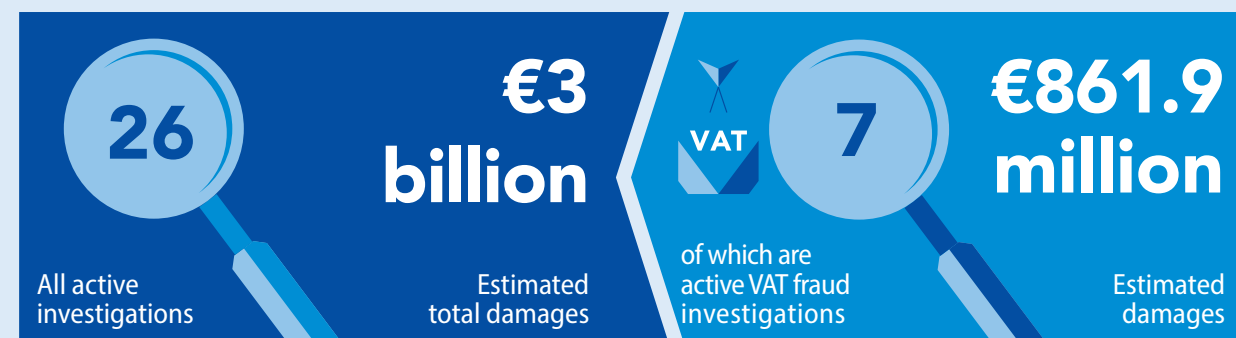
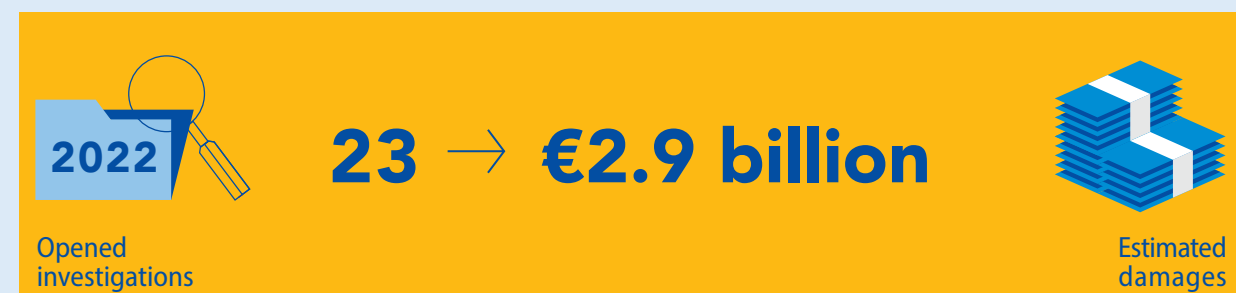
PORTO

OPERATIONAL ACTIVITY

DATA VALID ON 31 DECEMBER 2022

National European Delegated Prosecutors' Assistants: **4**

European Delegated Prosecutors (Active): **4**



RECEIVED REPORTS/COMPLAINTS

From EU institutions, bodies, offices and agencies	2	From private parties	3¹⁹
From national authorities	27	Ex officio	1
TOTAL			33

JUDICIAL ACTIVITY IN CRIMINAL CASES

1	Ongoing cases in the trial phase	0
1	Number of first court decisions	0
1	Number of appeals against first court decisions	0
2	Number of ongoing cases in the appeal phase	0
2	Number of final court decisions	0
2	Number of extraordinary legal remedies against court decisions	0
2	Convictions	0
2	Acquittals	0

TYPOLOGIES IDENTIFIED IN ACTIVE EPPO CASES

NUMBER OF INVESTIGATED OFFENCES BROKEN DOWN BY TYPE



NUMBER OF ACTIVE EXPENDITURE FRAUD CASES

Agricultural and rural development programmes	1	Climate and environment programmes	0
Maritime and fisheries programmes	0	Recovery and resilience programmes	2
International cooperation programmes	0	Mobility and transport, energy and digitalisation programmes	0
Regional and urban development programmes	5	Asylum, migration and integration programmes	0
Education and culture-related programmes	0	Industry, entrepreneurship and SMEs programmes	1
Research and innovation programmes	0	Security and defence programmes	0
Employment, social cohesion, inclusion and values programmes	0	Other programmes/doubt cases	2