

# LATVIA

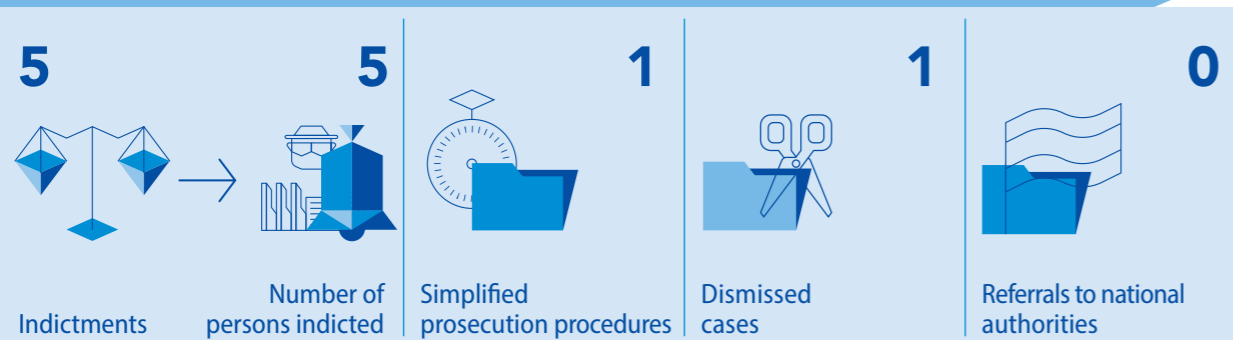
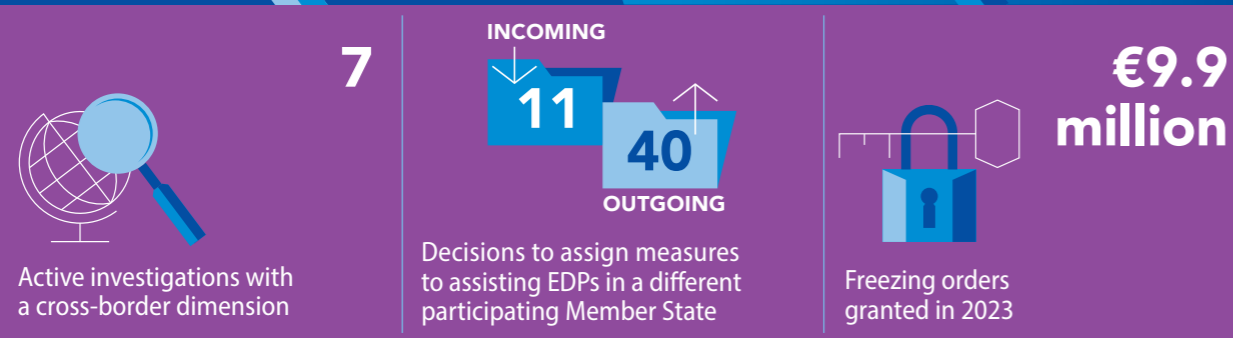
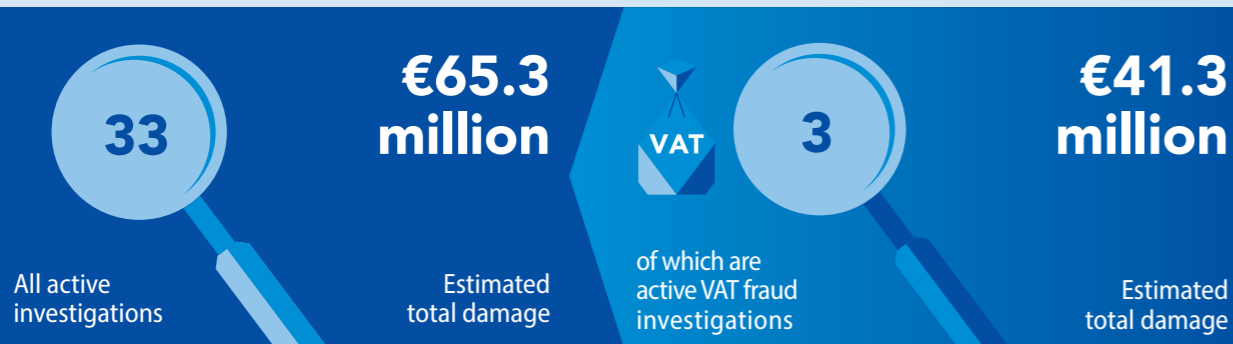


## OPERATIONAL ACTIVITY

DATA VALID ON 31 DECEMBER 2023

European Delegated Prosecutors (Active): **4**

National European Delegated Prosecutors' Assistants (FTE): **6**



## RECEIVED REPORTS/COMPLAINTS

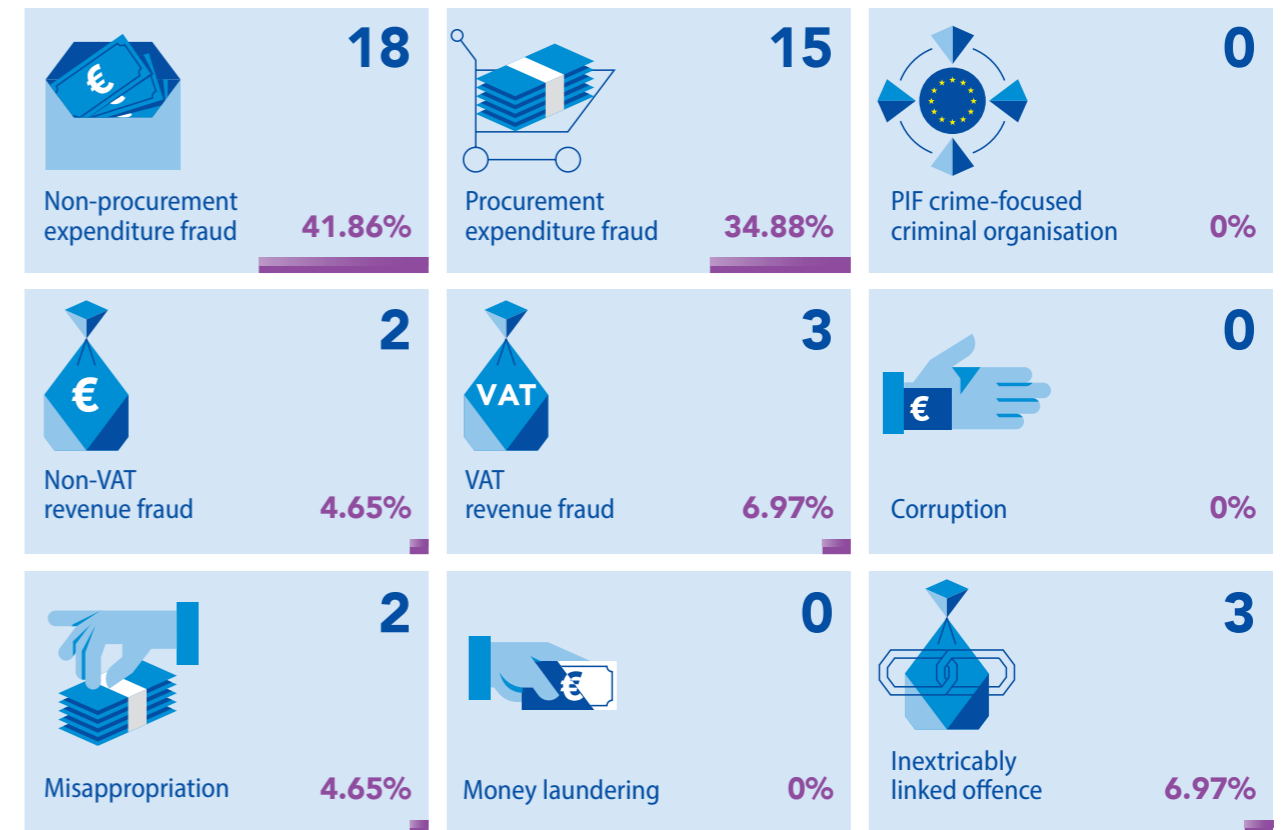
From EU institutions, bodies, offices and agencies	<b>1</b>	From private parties	<b>8</b> <sup>28</sup>
From national authorities	<b>27</b>	Ex officio	<b>1</b>
<b>TOTAL</b>			<b>37</b>

## JUDICIAL ACTIVITY IN CRIMINAL CASES

<b>1</b>	Ongoing cases in the trial phase	<b>2</b>
<b>1</b>	Number of first court decisions	<b>1</b>
<b>0</b>	Number of appeals against first court decisions	<b>0</b>
<b>2</b>	Number of ongoing cases in the appeal phase	<b>0</b>
<b>1</b>	Number of final court decisions	<b>1</b>
<b>0</b>	Number of extraordinary legal remedies against court decisions	<b>0</b>
<b>1</b>	Convictions	<b>1</b>
<b>0</b>	Acquittals	<b>0</b>

## TYOLOGIES IDENTIFIED IN ACTIVE EPPO CASES

NUMBER OF INVESTIGATED OFFENCES BROKEN DOWN BY TYPE



## ACTIVE FUNDING FRAUD INVESTIGATIONS

BROKEN DOWN BY PROGRAMME

Agricultural and rural development programmes	<b>7</b>	Climate and environment programmes	<b>0</b>
Maritime and fisheries programmes	<b>0</b>	Recovery and resilience programmes	<b>0</b>
International cooperation programmes	<b>0</b>	Mobility and transport, energy and digitalisation programmes	<b>0</b>
Regional and urban development programmes	<b>18</b>	Asylum, migration and integration programmes	<b>0</b>
Education and culture-related programmes	<b>1</b>	Industry, entrepreneurship and SME programmes	<b>0</b>
Research and innovation programmes	<b>0</b>	Security and defence programmes	<b>0</b>
Employment, social cohesion, inclusion and values programmes	<b>1</b>	Other programmes/doubt cases	<b>1</b>